

# Safran Project Network Drawing

Forum Safran 2019 | Presenter Steinar Dalva

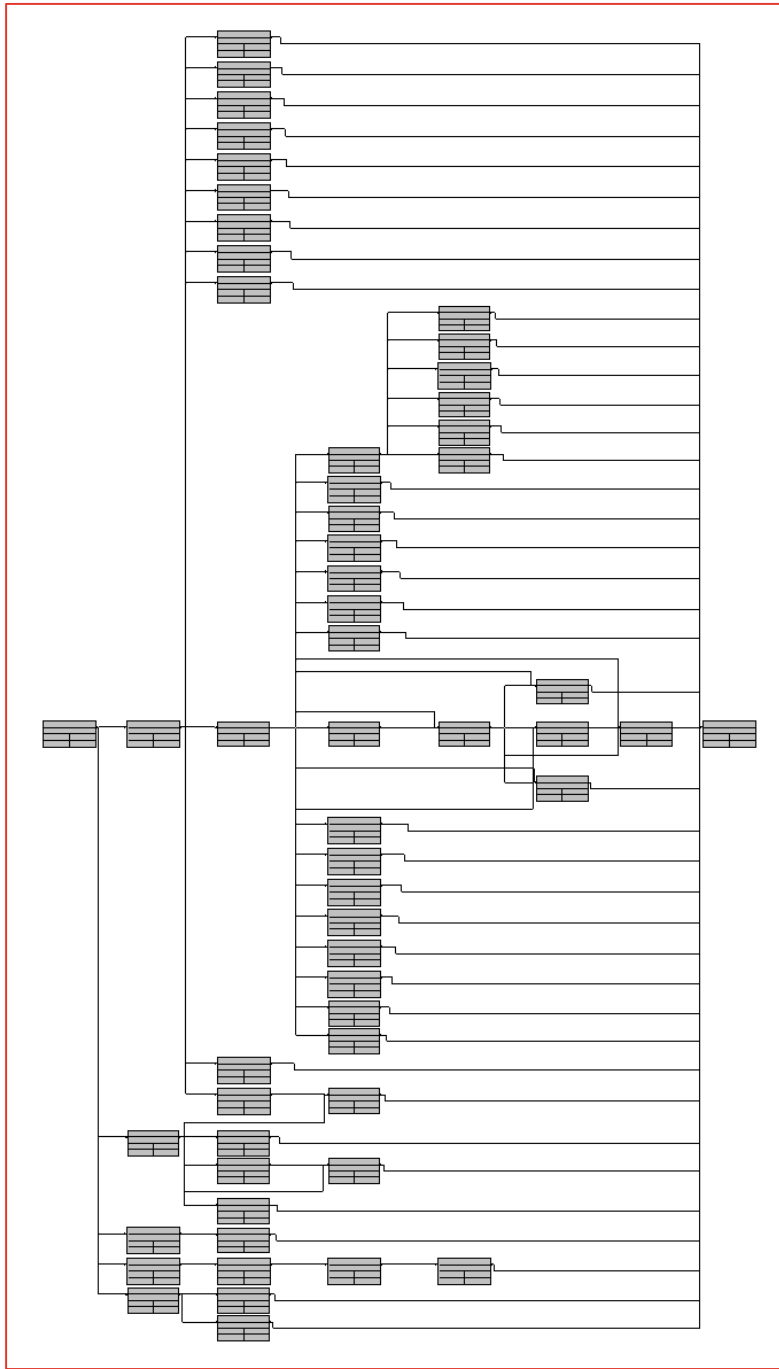
# Topic

- Our plans for Network Drawing



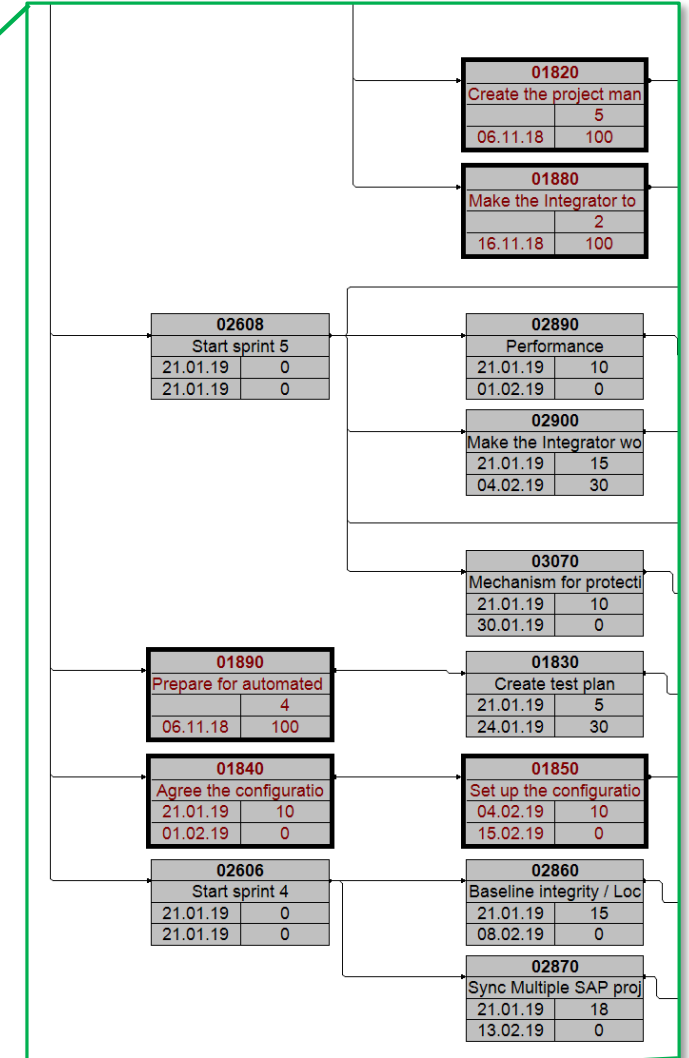
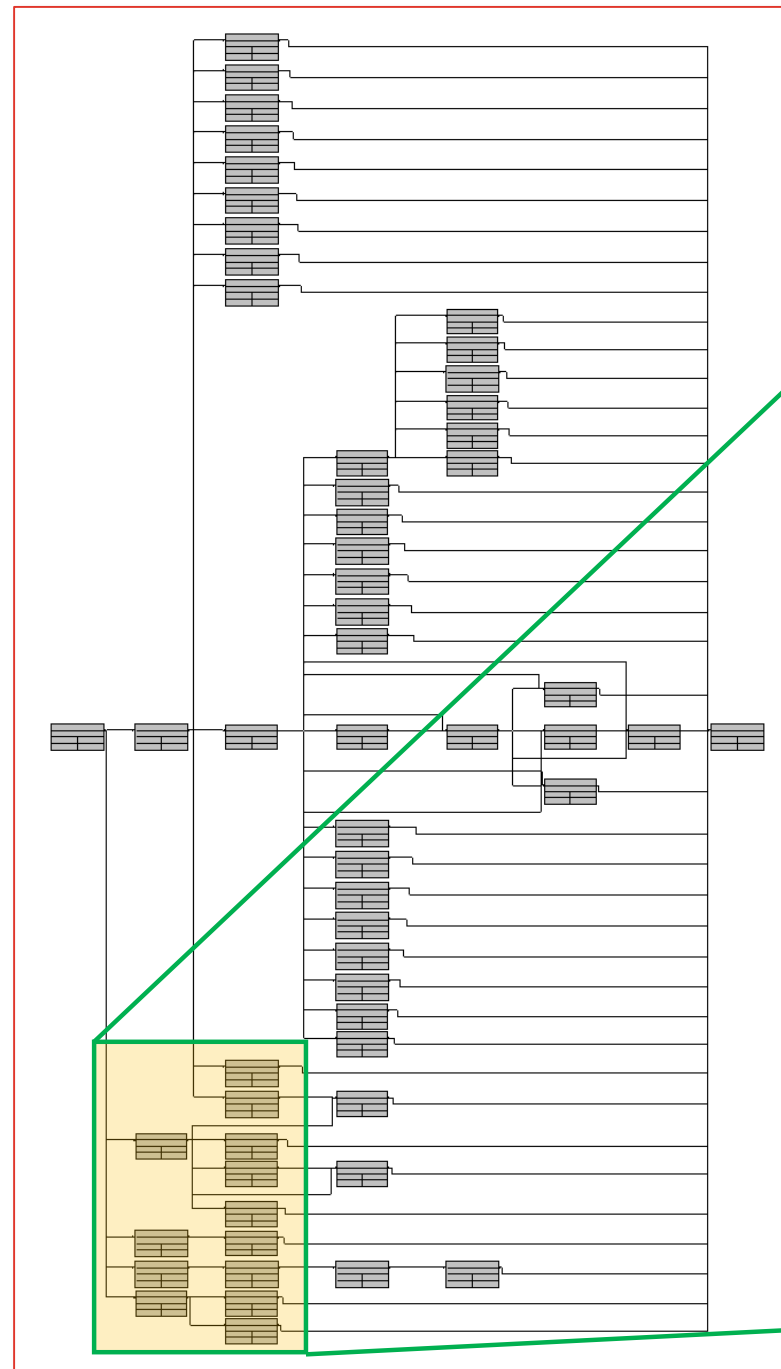
# Network drawing

- Looks like this
- May be printed
- May be zoomed...



# Network drawing

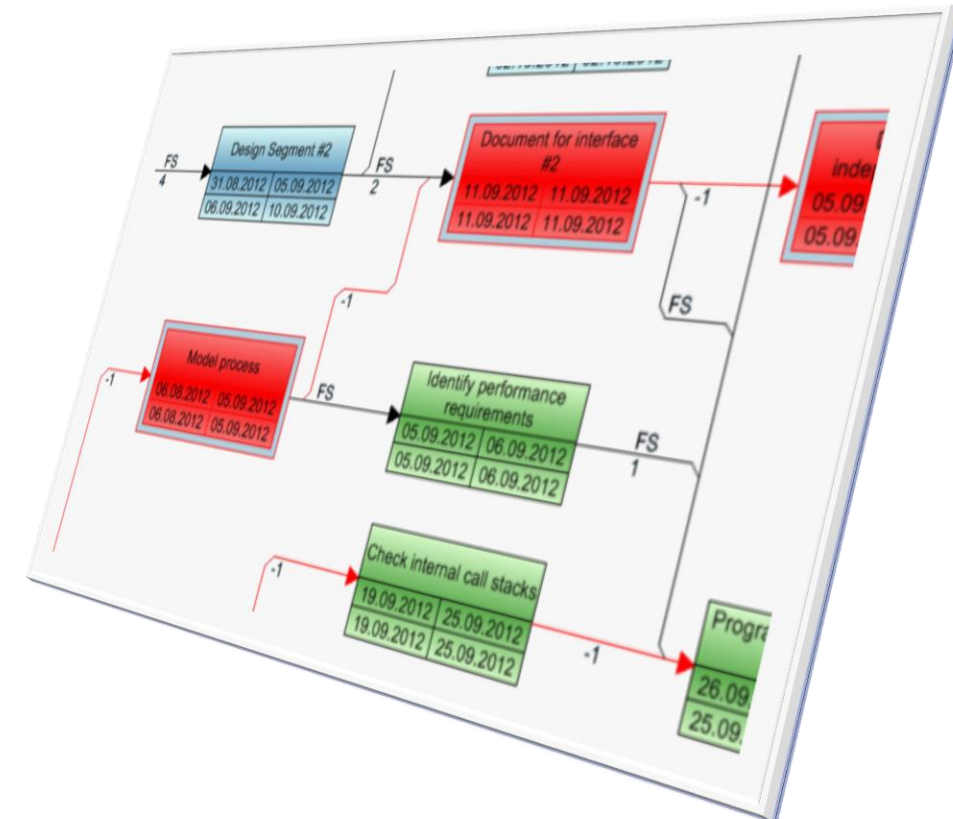
- Looks like this
- May be printed
- May be zoomed
  - To read details
    - Like critical path
- That has been it for over 20 years





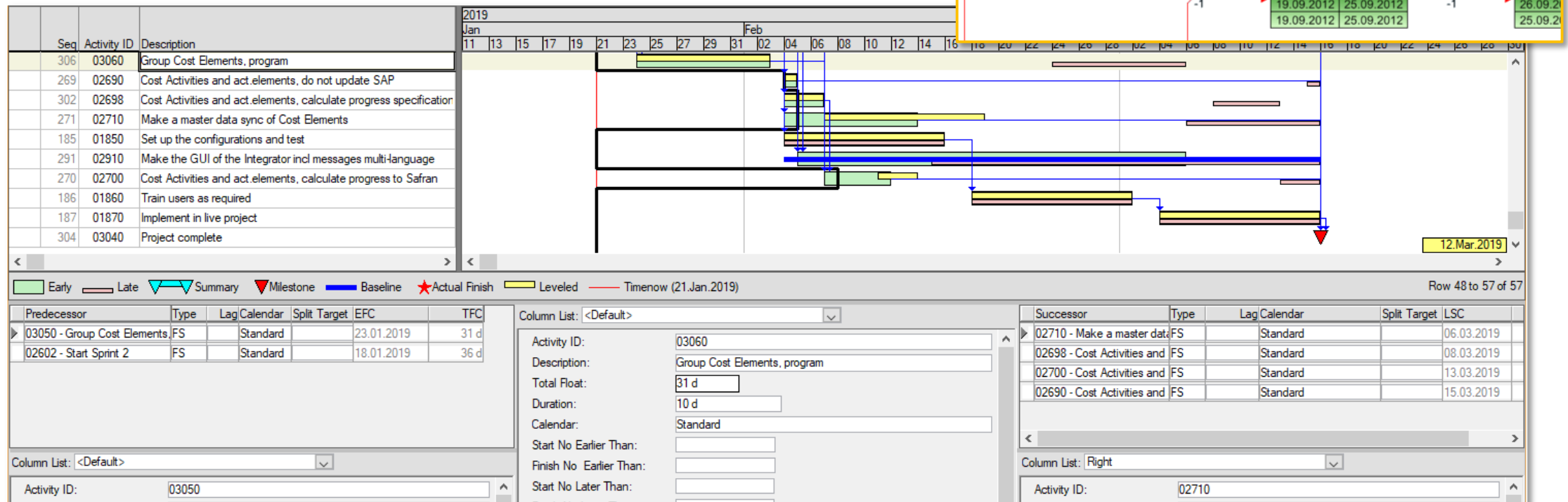
# We are now working on improvements

- Colors on text, lines, boxes
- More fonts
- Improved box design (today we have 3 designs)
- Section on code fields (also called swimlanes)
- Collapse / expand sections
- Some interactivity.



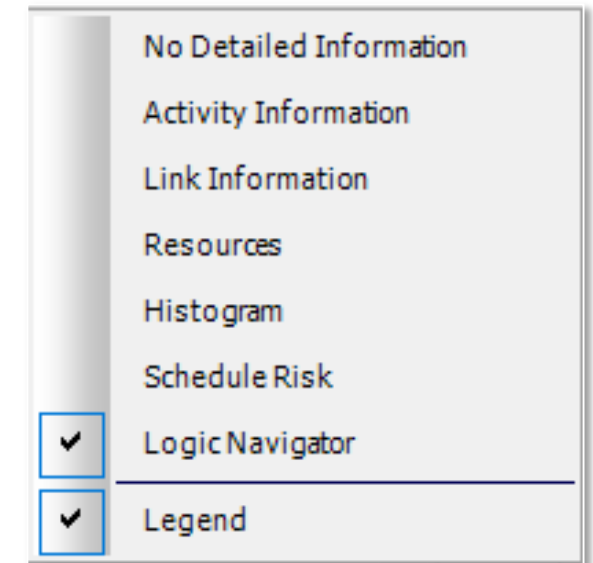
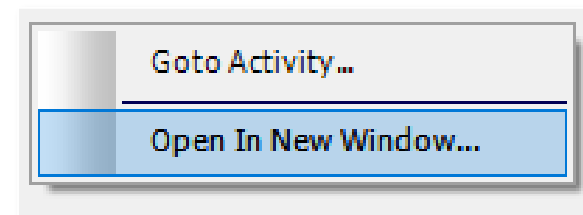
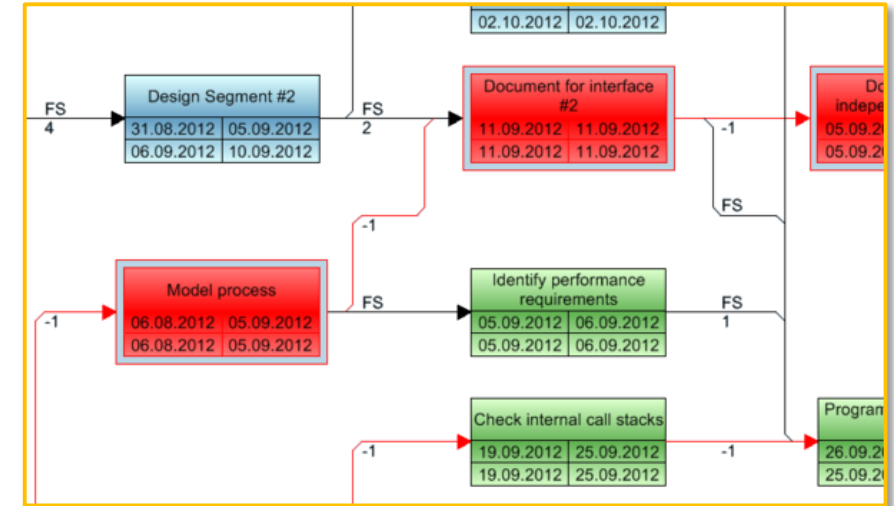
# Interactivity

- Primarily for navigation
- To work similar as today's Logic Navigator



# Interactivity

- Primarily for navigation
- To work similar as today's Logic Navigator
- Option to keep the current activity in the window center
- May be opened in multiple windows
  - As the other windows opened from the menu to the right.



We are now working on improvements

- Colors on text, lines, boxes
- More fonts
- Improved box design (today we have 3 designs)
- Section on code fields (also called swimlanes)
- Collapse / expand sections
- Some interactivity.

**Who want this?**



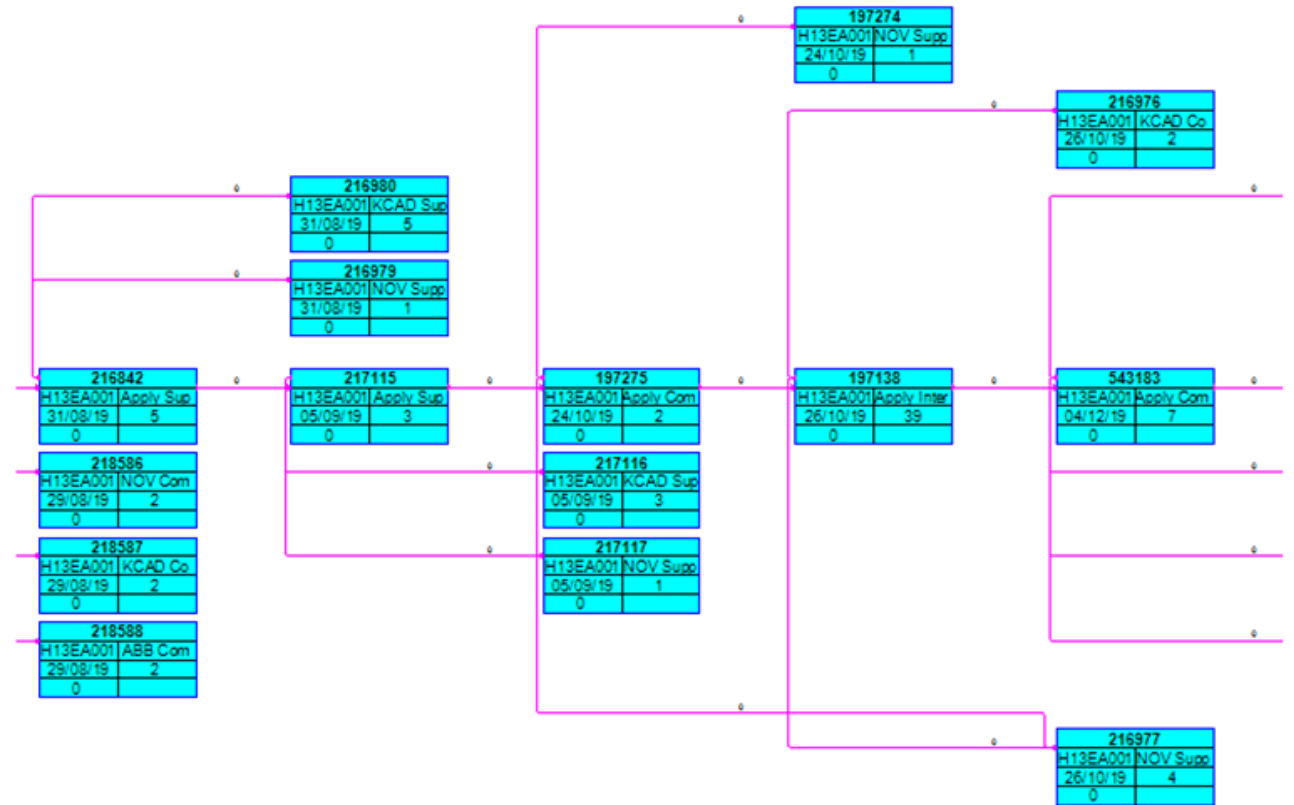
# Network diagram summary

- More colors
- More fonts
- More layouts
- Sectioning
- Interactivity.



# And one more thing...

- With about 3500 activities
  - Current version: 3 minutes
  - New version: 2 seconds
  - > 80 x
- More speed!



Thank you



